

**Shift** HEALTH  
ACCELERATOR

# Impact Report

---

**JULY 2023**

[shifthealthaccelerator.org](https://shifthealthaccelerator.org)

# Who is Shift Health Accelerator?

## Mission

To achieve health equity and dismantle structural racism, we partner with community leaders and institutions to shift institutional resources via community-led decision-making, financing, and data processes.

## Vision

Our peer-leader network model transforms power dynamics via innovative programming, advising, partnerships, and thought leadership.

We envision a healthy and just world, enabled by community power and leadership over the decisions, dollars, and data that shape community health.

## Advancing Community-Led Change

We operationalize our values through intentional, community-led and community-owned efforts with partners across the United States working in a diverse array of sectors, communities, and issue areas. Our tools and approach to our work is necessarily flexible to support leader colleagues in accessing resources starting from what they think is important to the health and well-being of their communities.

Celebrate Diversity, Empathy, and Humility

Equitable allocation of resources

Shared Leadership

## Shift's Values

Define wellbeing at community levels

Accountability to community vision of health

# Community Driven Work

## Building Networks of Community Leaders to Advance Community-Led Change

### Shift Collaborative Fund

The Shift Collaborative Fund, a participatory grantmaking model, was established and led by an Investment Committee made up of community-based organizations and community leaders. In 2022, the Collaborative Fund used a participatory process to disburse \$200K, seeded by Blue Shield of California Foundation, to community leaders across California. Through this model, every step of the “traditional” funding process, from vision setting, to the application, to key grant decisions, to defining what success would look like, was led by community leaders. Shift’s participatory model is now being replicated to disburse over \$21M in participatory grantmaking stemming from this project.

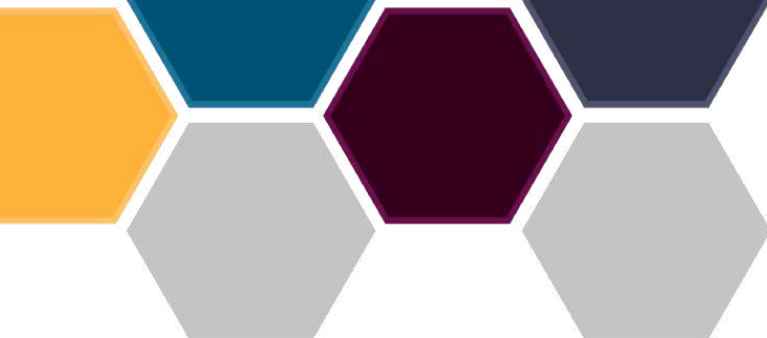


*Photo Credit: California Black Women's Health Project*

### **The Investment Committee established several goals for the Collaborative Fund:**

Reduce barriers to funding for marginalized communities by implementing a participatory grantmaking process that is driven by the experience and leadership of the communities it will serve;

- Increase the understanding of effective strategies and catalyze meaningful change in health equity;
- Improve the physical, emotional, and spiritual well-being of people in local movements through innovative projects; and
- Address the immediate, intermediate, and long-term health needs of vulnerable communities by supporting community-driven strategies and projects.



Shift Health Accelerator partnered with Rio Holaday to develop a graphic to represent our community-owned grantmaking process. This tool is a resource for Shift and our network of community leaders to replicate this participatory grantmaking process.

# COMMUNITY-OWNED GRANTMAKING

\$200K MOVED TO COMMUNITY INVESTMENT COMMITTEE TO RESOURCE HEALTH EQUITY

## COMMUNITY GOVERNANCE IS POSSIBLE



### VALUES:

INTEGRITY,  
ACCOUNTABILITY,  
COLLABORATION |  
INNOVATION

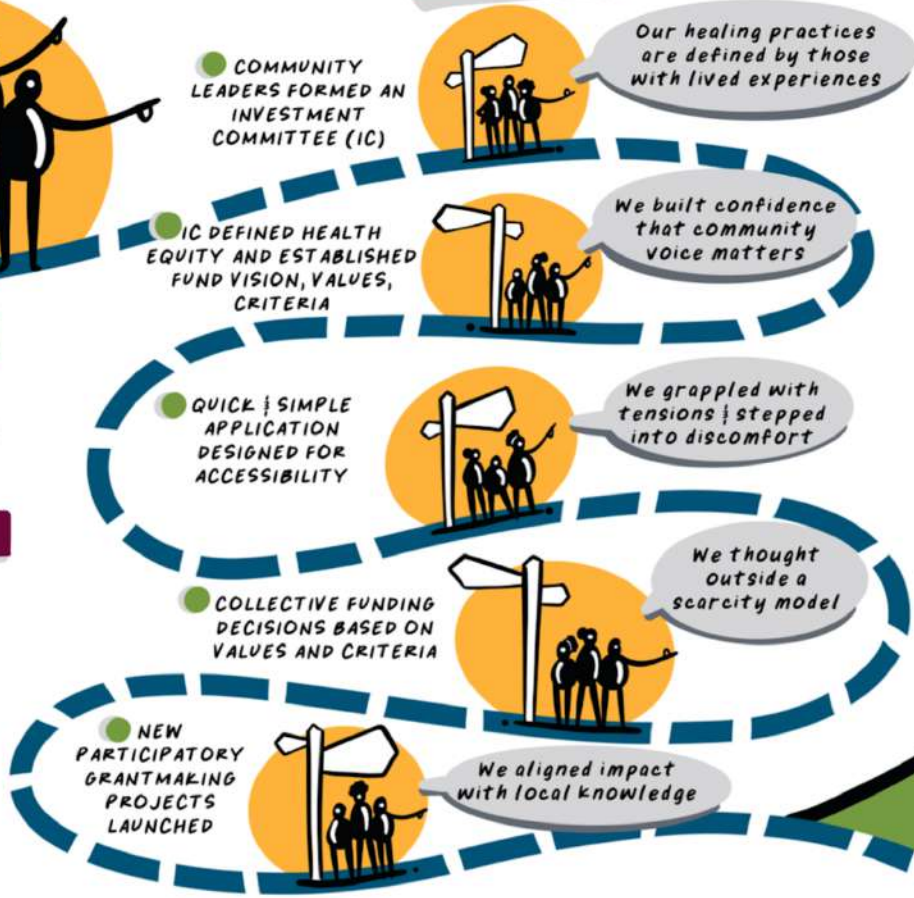
### COMMITMENTS:

SHARED  
ACCOUNTABILITY,  
LEADERSHIP |  
POWER

### PROCESSES:

RESPOND TO |  
ELEVATE  
COMMUNITY  
KNOWLEDGE

## OUR PROCESS



## OUR IMPACT

- CATALYZE COMMUNITY-DRIVEN HEALTH EQUITY SOLUTIONS LED BY
- CALIFORNIA BLACK WOMEN'S HEALTH PROJECT
  - INSIGHT GARDEN PROGRAM
  - TRANSFORMATIVE IN-PRISON WORKGROUP
  - CONSCIOUS CULTURA
  - METROPOLITAN TRANSPORTATION COMMISSION AND UPAA SF FOUNDATION
  - DEL PASO HEIGHTS GROWERS ALLIANCE
  - BACK TO THE START
  - EAST LOS ANGELES COMMUNITY CORPORATION





Photo Credit: Insight Garden Program

*"The Shift team brought experienced, intellectually curious, multidisciplinary and social justice focused leadership across sectors and communities to our collaboration. This diversity of expertise supported CABWHP with taking a more strategic and expansive approach to our programmatic development and stakeholder engagement."*

-California Black Women's Health Project

During the grant period, grantees took great strides towards health equity in their communities.

### **The Transformative In-Prison Workgroup**

"We were successful in securing \$20 million for community-based in-prison programs, influencing the development and rollout of the Request for Proposals, and continue to influence the implementation of this state allocation. With a \$20 million state investment in healing and transformative programs, incarcerated people will have continued and increased access to programs and services that can help transform their lives."

### **Back to the Start**

"So far, two of the six incarcerated leads/facilitators (all serving life sentences) have been found suitable for parole (including a commutation by the Governor), and a third co-lead was just recently found eligible to be resentenced...The participants also are coming away feeling motivated and empowered by their ability to tell and share their stories in order to educate the public and drive change."

### **Insight Garden Program**

"Sustainably designed a women's reentry space + garden in the Central Valley/Sacramento... and supported an individual to study medicinal plants and then teach content."

### **Del Paso Heights Growers Association**

"We continue to build our leadership through the operation and management of urban gardens as a space for recovery, healing and mental health wellbeing. We have continued to provide 12 additional hours of training on Urban Agriculture and Agroforestry, yielding over 200 pounds of foods from our gardens that were distributed at no cost to community members and volunteers."

### **California Black Women's Health Project (CABWHP)**

The benefits and success measures of this project were multi-fold: 1) California Black Women's Health Project was able to expand the number of Birthworker Sister Circles held in and across our key statewide regions: Los Angeles County, Sacramento County, Inland Empire, and the Bay Area, 2) through our "Showering the Village" Sister Circles, over 100 birthers, extended family members, and community members were connected to resources and supports specific tailored to address the health, socio-emotional, and mental health needs and lived experiences of Black people, and 3) participating Birthworkers expressed increased confidence and readiness to serve as CABWHP Maternal and Mental Health Ambassadors."



*"The experience with Shift taught me that opportunities and spaces exist that trust community partners to express needs and develop goals in partnership with community members."*

**- Ginny Oshiro,**  
Transformative In-Prison Workgroup

### **Conscious Cultura**

For participating students, Conscious Cultura was able to "Create a very safe, contained vulnerable space for the young women and men to belong" and through their work with teachers they focused on "destigmatizing mental health and explored the importance for Latinx communities."

### **East Los Angeles Community Corporation (ELACC)**

"ELACC inspired trust with over 100 individuals across their affordable housing communities and had highly sensitive conversations about health and wellness for the first time."

## Shift Clinic

The Shift Clinic is a technical assistance model aimed at building community capacity to identify and access resources from health systems and funders. The Clinic approach activates a network of community and cross-sector leaders to change the systems for how healthcare institutions invest in racial and health equity—as defined and led by communities experiencing those inequities in diverse geographies. The broad goals of the Clinic, typically run as a short-term “sprint” of 6 months of dedicated, individualized TA, network gatherings for shared learning, participatory grantmaking Collaborative Fund, and network strategy focused on increasing investments in community-led change and institutional accountability to health equity. The Clinic goals include:

- Testing and refining tools to “translate” community-defined outcomes into pitches for health funders, including philanthropy, healthcare institutions, and corporations;
- Supporting community leaders to direct healthcare investments into the outcomes their communities define;
- Aligning community leaders and healthcare institutions to practice their commitments to racial and health equity by moving resources into community-led and controlled work;
- Positioning community leaders to hold healthcare and health systems accountable for their equity commitments;
- Uplifting learning and thought leadership on levers to influence decision-making and accountability specific to how healthcare invests in health equity; and
- Articulating the importance of healing in racial equity work, and developing strategies pooled funding for healing-related activities in community change initiatives.

The Clinic has been successfully run in California, North Carolina, and the Pacific Northwest in 2021 and again in 2022 with support from the Blue Shield of California Foundation and Robert Wood Johnson Foundation. Currently, Shift is activating its network of rural health equity leaders to run a Clinic and Collaborative Fund focused on rural community health. The Rural Clinic will center on key takeaways from a rural equity roundtable and the unique resourcing needs faced by our colleagues in rural communities.

*Photo Credit: Del Paso Heights Growers' Alliance*



*"Access is a lot easier being in an urban area where you have all of the resources, public transportation and broadband internet service, it is a whole different challenge in rural areas."*

**- Danielle Pendergrass,**  
Culture of Health Leader, RWJF



*Photo Credit: Hood Huggers International*

## Rural Equity Roundtable 2022

Through Shift's work on rural equity, we build on the values of a collaborative healthcare model that is based on shared leadership. We promote a change in traditional power dynamics between communities and institutions by placing communities at the forefront of decision-making processes, and dismantling practices that perpetuate structural racism to ensure equitable health outcomes for all.

In 2022, Shift hosted a virtual rural roundtable discussion in collaboration with [Vertical Strategies](#) and leaders from our Robert Wood Johnson Foundation [Culture of Health Leaders](#) program, with financial support from the [Community Change Leadership Network \(CCLN\)](#). Community health leaders were invited to propose innovative efforts to propel commitments to community-led and owned investments in health in rural areas across the United States. The primary goal of this roundtable was to better understand various challenges that leaders face in advancing a community-rooted vision of health equity in rural America. The diverse group of grassroots leaders brainstormed strategies for effectively overcoming key barriers to community-led change in rural communities and discussed solutions to multiple challenges related to accessing healthcare equity dollars, collaborative decision-making processes, and rural community empowerment.

# Advising and Strategic Partnerships

## Holding Institutions Accountable to Community Health Equity

### Healthcare Accountability and Learning Network

Through centering community expertise, the Shift Healthcare Accountability Learning Network aims to create an action-learning space for anti-racism, truth and reconciliation, and political education. The Network convenes healthcare institutions - including health systems, payors and healthcare technology companies that have committed to design and implement health investment, data, and governance initiatives that reflect concrete shifts in power from healthcare institutions to communities, as well as develop a framework for healthcare accountability to community.

The Learning Network experience consists of two phases. The first phase, which lasted from September 2022 to December 2022, was devoted to learning sessions and action planning. Phase 2 is an action implementation phase lasting from January 2023 to Summer 2023, during which institutions will participate in a community-led initiative and explore recommendations for the sector based on their learnings. This project advances Shift's values of diversity celebration, equitable utilization of resources, data, and power through inclusive approaches. We work to transition from institutions that are predatory to institutions that are allies. The action phase continues into 2023 and will result in tangible examples of institutions sharing power that other healthcare institutions can learn from, replicate, and use to advance change within their systems.

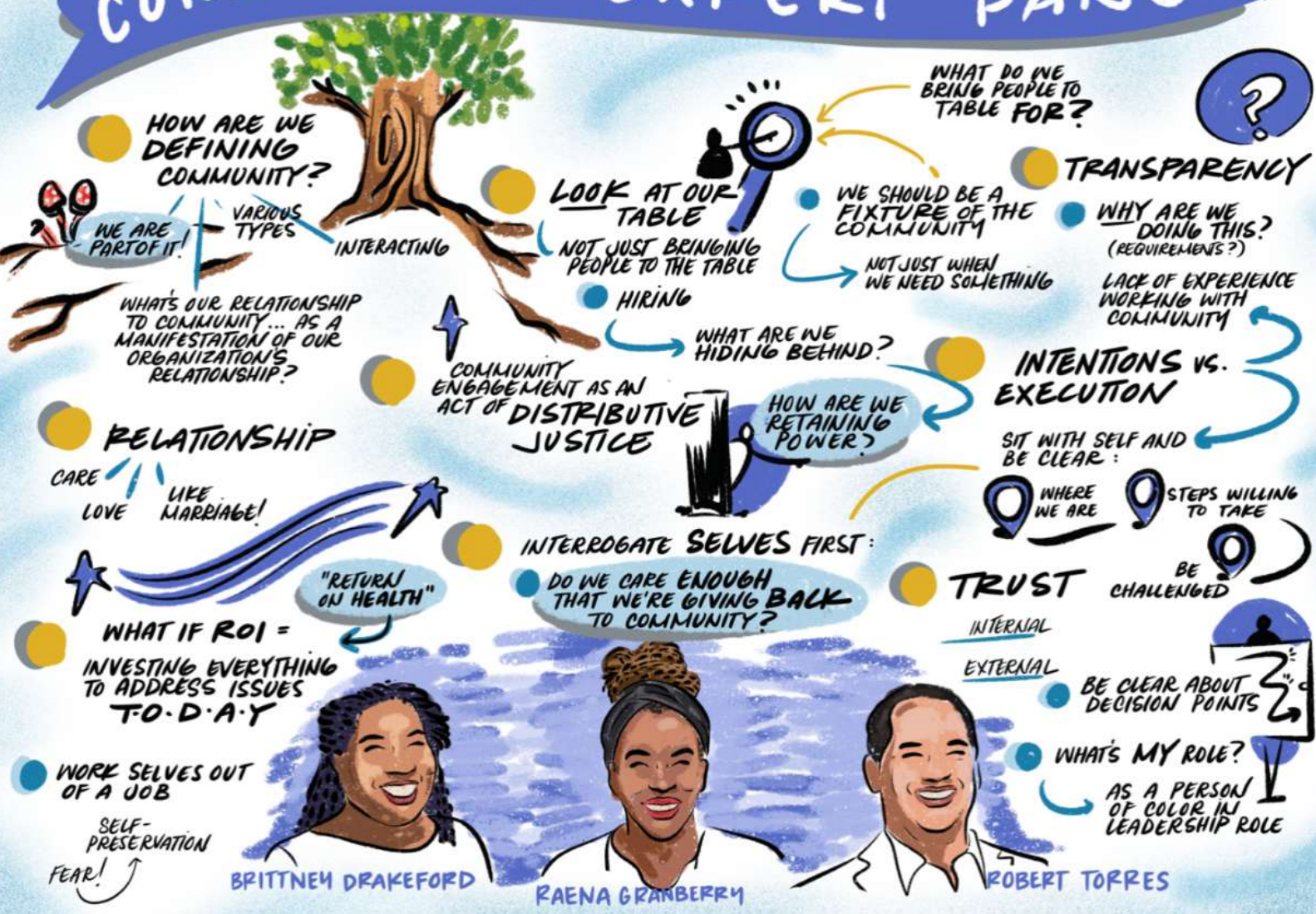


Photo Credit: Corinne Chacon

Content from the Learning Network will be disseminated to the field through various channels, including a toolkit that includes intensive reflection on structural racism, institutional harm, and accountability to community; communication about learnings at sector conferences and events; and a Shift convening to be held in early Fall 2023.

HEALTHCARE ACCOUNTABILITY LEARNING NETWORK KICKOFF · SEPTEMBER 15, 2022 · GRAPHIC RECORDING BY RIO HOLADAM

# COMMUNITY EXPERT PANEL



## Anchors in Resilient Communities

Shift has been advising the Anchors in Resilient Communities (ARC) initiative for two years. ARC is a multi sector partnership in the San Francisco Bay Area convened by Health Care Without Harm (HCWH) and Emerald Cities Collaborative (ECC). ARC focuses on community-rooted innovations and equitable decision-making between anchor institutions and community partners to accelerate collaborative approaches to community health, wealth, and climate resilience through local procurement, hiring and investing. Shift has been helping deepen anchor commitments to community-institution co-design and surfacing opportunities for anchor collaboration and co-investment in community initiatives. ARC's approach to systems change is built on a belief that multiple sectors need to work together to achieve transformative community economies and health ecosystems through strong community-institutional partnerships that evolve and deepen over time. Shift is supporting the ARC initiative to operationalize a shared power structure to create a pipeline of locally driven social enterprises and health projects that are ripe for anchor institutions' investments and collaboration. Shift is facilitating learning and evaluation of the initiative as well as supporting an exploration of anchor strategies such as a co-investment fund and participatory grantmaking models to center community decision-making governance of anchor commitments. This work continues into 2023, specifically to support a Bay Area Community Climate Equity Initiative and support ARC model replication in other geographies across the U.S., building on a recent report Healthcare without Harm launched entitled Anchored by health care: Strategies for health systems.



*"It is impossible for us to address one issue when everything is falling apart; we have to get underneath it all and lift it up all at once."*

- Michael Howard, Culture of Health Leader, RWJF

Photo Credit: Anchors in Resilient Communities

## Participatory Investing Action Lab

Shift Health Accelerator served as an advisor to Common Future's Participatory Investing Action Lab, which explored community-led, power-sharing approaches to funder investments. While participatory grantmaking has started to gain traction in philanthropy, the idea that community leaders should also inform institutional investment strategy and decisions is much more rare. Shift brought field expertise and its network to the overarching process, which included eight funders committed to supporting efforts at the intersection of health and wealth. In particular, we contributed to the design of a participatory investing fund for the Action Lab, in which members of Shift's network contributed to fund design -including what practices should be put in place to make philanthropic investments less extractive for community; sourcing opportunities for investment; and decision-making on which opportunities should be funded. Four members of Shift's network put forth proposals for the fund, with two members -- Blue Note Junction in Asheville, NC, and Cihuapactli Collective in Phoenix, AZ - receiving a total of \$175K in low-interest investment and one member receiving a \$75K grant. Common Future recently released a Participatory Investing toolkit which we helped develop to expand this work in other foundations.

*To partner with the Shift team to promote community-driven health equity, email [info@shifthealthaccelerator.org](mailto:info@shifthealthaccelerator.org)*

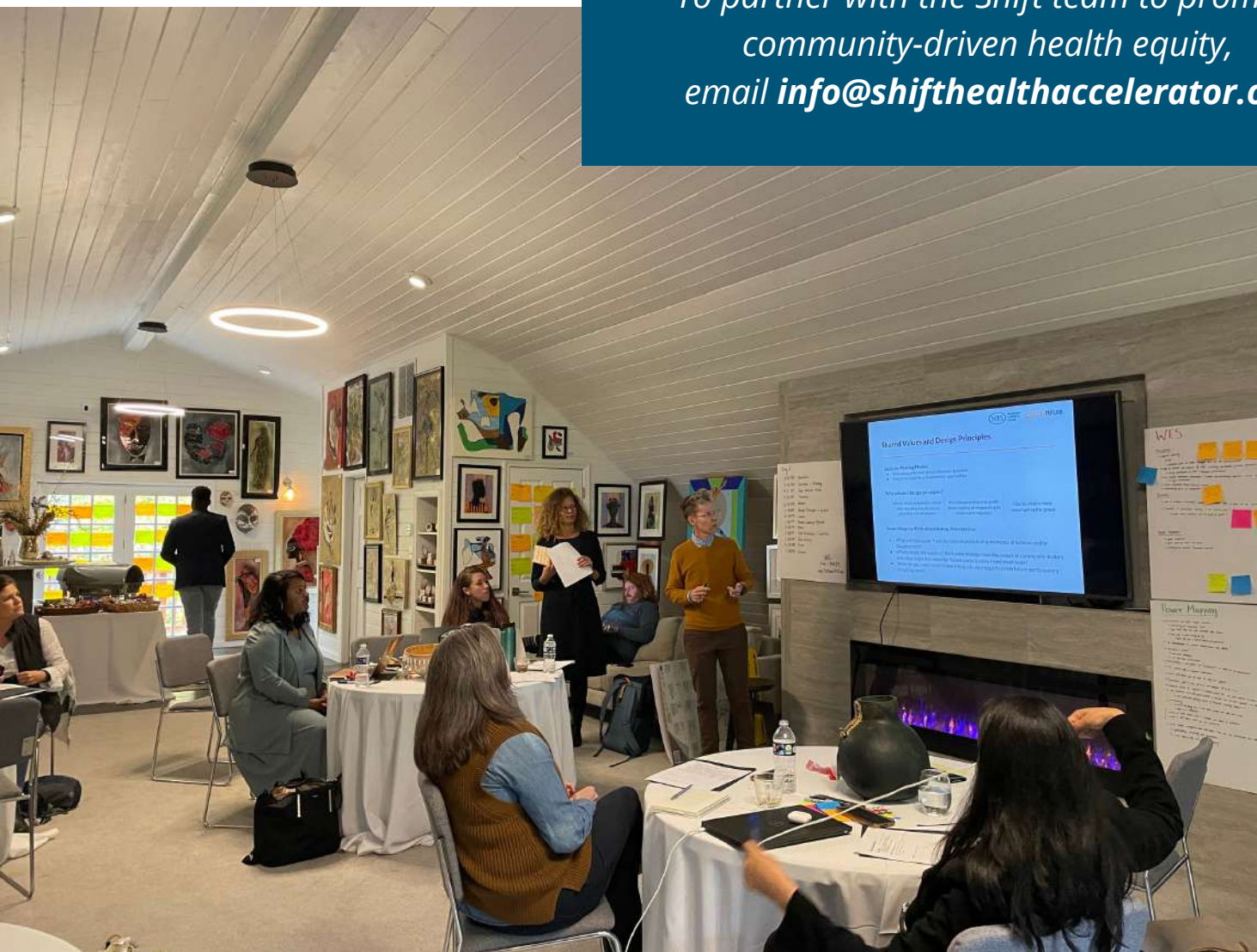


Photo Credit: Common Future

## Thank you to our collaborators!

Shift would like to acknowledge all of our community partners, equity advisors, project advisors, and project support colleagues. Moreover, we are thankful to our funders (Blue Shield of California Foundation and Robert Wood Johnson Foundation) for believing in our mission and vision as well as our fiscal sponsor (Willamette Partnership) and Randall Lewis Health and Policy Fellow (Hena Dhir) for helping us successfully deliver on our community driven projects.



Photo Credit: Insight Garden Program



Photo Credit: Common Future



Photo Credit: Transformative In-prison Workgroup

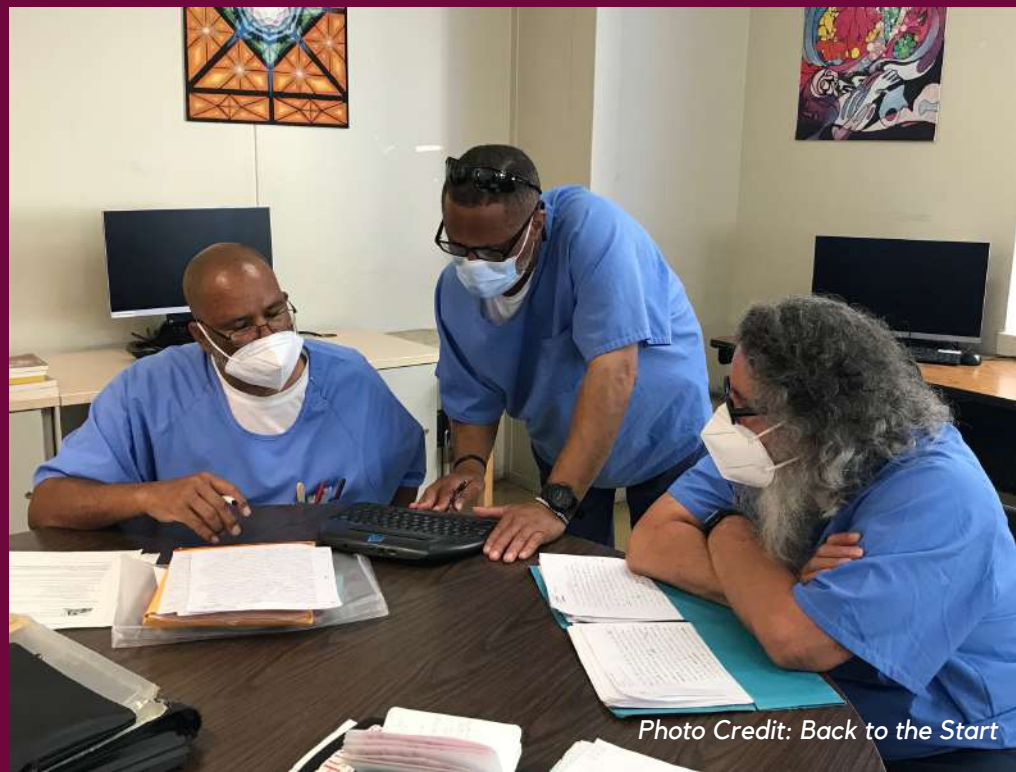


Photo Credit: Back to the Start